

Forest Management Challenges and Opportunities in the Maritimes

Don Floyd

Faculty of Forestry and
Environmental Management

Univ. of New Brunswick

dfloyd@unb.ca

Brief examination of four questions

- What are the forces driving forest management in the Maritimes?
- What are the major barriers to transboundary biodiversity conservation?
- What Opportunities Exist?
- What are the most important resources/steps to achieve this?

Generally

- Maritime Canada is different than the U.S.
 - Provincial governments in the region are more concerned with economic development issues
 - NB and NS are “poor cousins” in the Confederation
 - 3 Provincial priorities
 - Economic development
 - Health Care
 - Education
 - Environment is a “second tier” issue
 - Interest groups have less influence than in the U.S.

1. Major drivers of forest management

- In NB, Crown forests are multiple use with power for allocation vested in Minister
- NB is 2nd most forest industry-dependent province in Canada
- Employment, royalties, and forest enterprise-based taxes are critical for government
- Sustainable forest management will continue to emphasize economic objectives

1. Major drivers of forest management

Growing recognition of climate change-related forest management, but public and private policy change still lags a bit.

Increased concern for insect/disease vulnerability

Research is convincing

Planting mixes are beginning to reflect “warmer-wetter” predictions

Strong CFS leadership

1. Major drivers of forest management

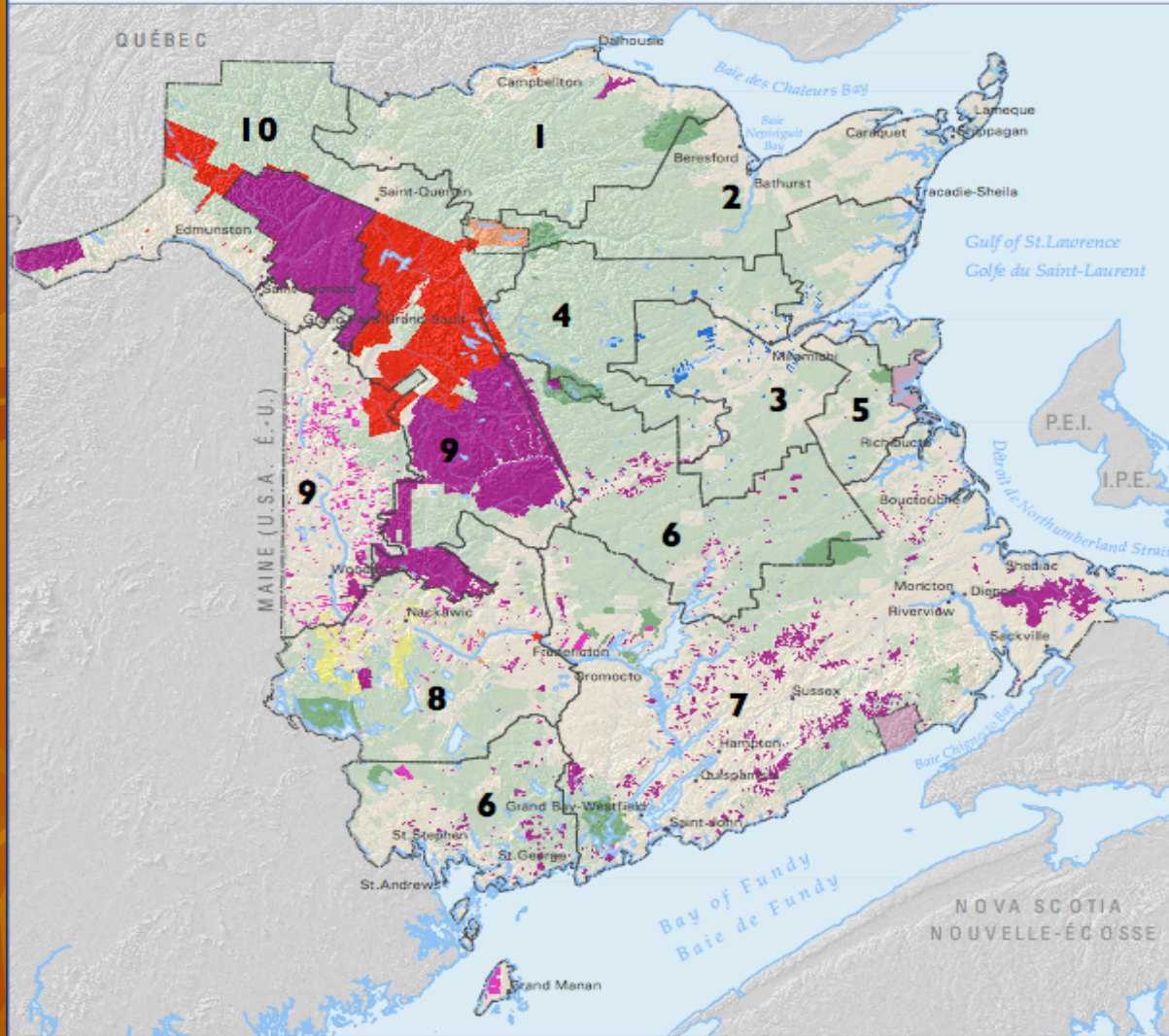
- Developing forest biomass-based energy projects will complicate biodiversity conservation on private lands in particular
- Increased competition for wood fiber is already causing problems with biomass generation in Maine and Quebec
- Haul costs limit economic viability

1. Major drivers of forest management

- Demographic change:
 - 25% of NB forest owned by PWO's
 - Coincident with high importance/high threat
 - Average age: ~55
 - Much of area in St. John Watershed and Fundy coast

New Brunswick timberland ownership

Terrains forestiers du Nouveau-Brunswick



| Industrial Freeholds | |
|----------------------|----------------------------|
| Red | Acadian Timber Income Fund |
| Yellow | AV Nackawic |
| Orange | Bowater Maritimes Inc. |
| Pink | Crabbe |
| Purple | J.D. Irving Ltd |
| Blue | UPM Kymmene Miramichi |
| Dark Blue | Weyerhaeuser Company Ltd. |

| Crown Licenses | |
|----------------|---------------------------------|
| 1 | Bowater Maritimes Inc. |
| 6, 7 | J. D. Irving Ltd. |
| 9, 10 | Nexfor Fraser Papers |
| 8 | St. Anne-Nackawic Pulp Co. Ltd. |
| 2, 3, 4 | UPM Kymmene Miramichi Inc. |
| 5 | Weyerhaeuser Company Ltd. |

| Conservation Lands | |
|--------------------|-----------------------------------|
| Light Green | Federal Park / Parc National |
| Orange | Provincial Park / Parc Provincial |
| Light Green | Provincial Crown Land |
| Light Green | Terre de la Couronne provinciale |
| Dark Green | Protected Area / Zone protégée |

Source : Service New Brunswick / Service Nouveau-Brunswick
 Map production / Réalisation : Bélair, C. Juin 2008.



Source: C. Belair
 NTNBN

2. Major barriers to trans-boundary biodiversity conservation

- Good science is necessary but ultimately insufficient to sway public policy in the Maritimes

“There is growing scientific consensus that science-based landscape conservation is the most powerful tool for protecting biodiversity today. This approach is a proven and powerful tool. Coupled with the collaborative spirit and resources of our members and partners, it will allow us to establish protected, large core areas, buffer them via well-managed stewardship lands, and ensure functional habitat connectivity between protected areas, and across the entire ecoregion.”

- Conservation community must be able to make compelling economic arguments for their strategy

2. Major barriers to trans-boundary biodiversity conservation

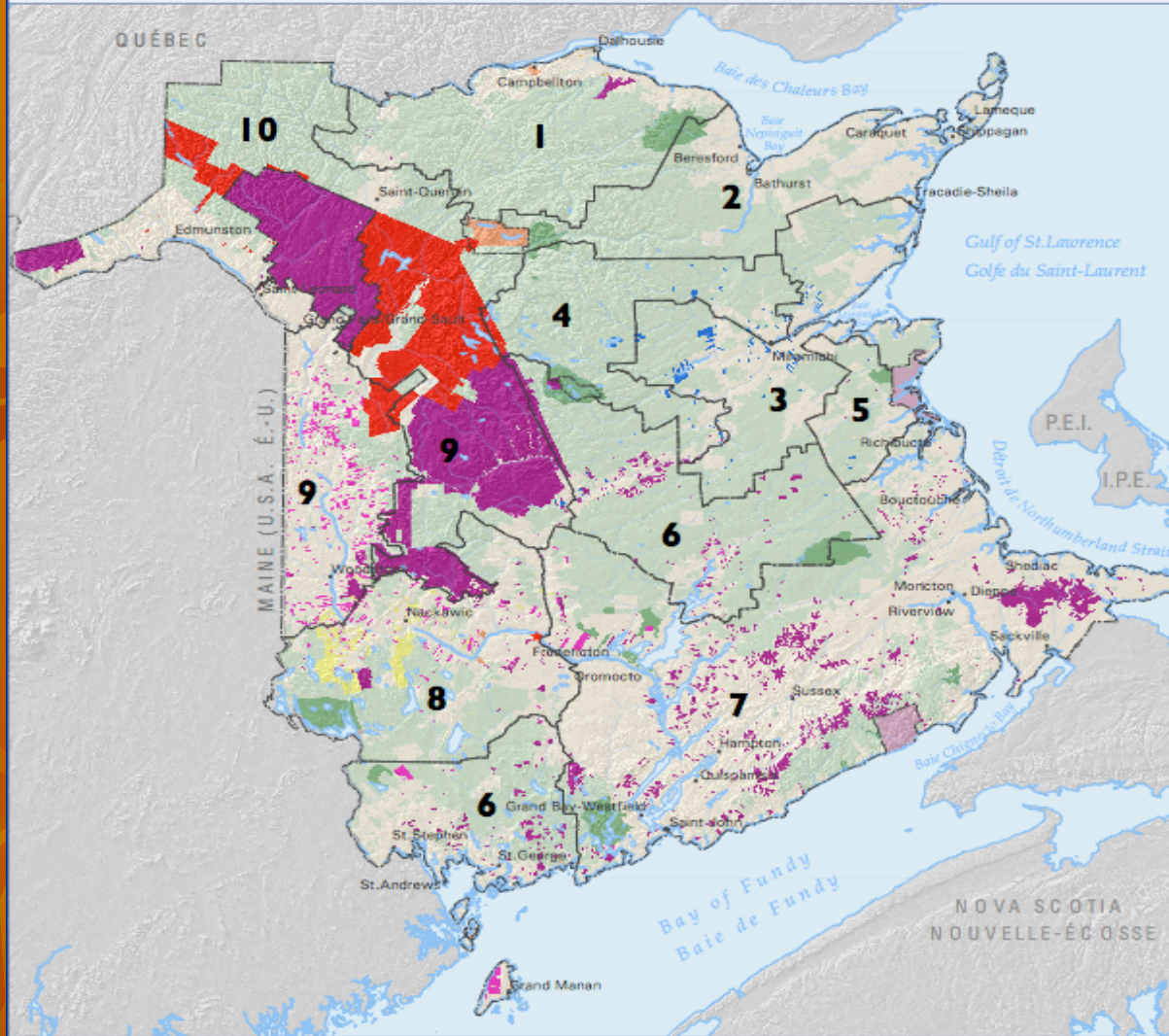
- Lack of financial resources for private land conservation institutions
 - We don't have the muscle of TPL and TNC

3. Opportunities?

- On Private Land:
 - Demographic transition allows potential increase in targeted purchase/donation
 - Elimination of income trusts probably reduces involvement of TIMOs/REITs
 - Wagner and partners in Nova Scotia
 - Acadian Timber Income Fund in NB

New Brunswick timberland ownership

Terrains forestiers du Nouveau-Brunswick



Industrial Freeholds

| | |
|---|----------------------------|
| ■ | Acadian Timber Income Fund |
| ■ | AV Nackawic |
| ■ | Bowater Maritimes Inc. |
| ■ | Crabbe |
| ■ | J.D. Irving Ltd |
| ■ | UPM Kymmene Miramichi |
| ■ | Weyerhaeuser Company Ltd. |

Crown Licenses

| | |
|---------|---------------------------------|
| 1 | Bowater Maritimes Inc. |
| 6, 7 | J. D. Irving Ltd. |
| 9, 10 | Nexfor Fraser Papers |
| 8 | St. Anne-Nackawic Pulp Co. Ltd. |
| 2, 3, 4 | UPM Kymmene Miramichi Inc. |
| 5 | Weyerhaeuser Company Ltd. |

Conservation Lands

| | |
|--|-----------------------------------|
| ■ | Federal Park / Parc National |
| ■ | Provincial Park / Parc Provincial |
| ■ | Provincial Crown Land |
| ■ | Terre de la Couronne provinciale |
| ■ | Protected Area / Zone protégée |

Source : Service New Brunswick / Service Nouveau-Brunswick
 Map production / Réalisation : Bélair, C. Juin 2008.



Source: C. Belair
 NTN

3. Opportunities?

- On Crown Land:
 - QC and NB are contemplating Triad management
 - NB is reviewing options for reallocating Crown land policy
 - Brief review of Erdle Task Force Options

Allocation Options for Crown Forests in N.B.

| | A | B | C | D | E | F | G | H |
|---------------------------------|----|----|----|----|----|----|----|----|
| General Forest | 68 | 62 | 68 | 75 | 75 | 79 | 82 | 72 |
| Protected Natural Area | 4 | 22 | 10 | 13 | 13 | 10 | 10 | 16 |
| Conservation Forest Outside PNA | 28 | 16 | 22 | 12 | 12 | 11 | 8 | 12 |

Oversimplified. For Illustration Only!

Most Important resources/steps?

- Conservation community must develop capability to deliver useful economic information AS WELL AS science in public policy deliberations.
 - Example: David Brower and Echo Park Dam